

NMI Antibody

Rabbit Polyclonal

Antigen Affinity Purified Protein ID NP_004679.1

Catalog No. A300-551A-T GeneID 9111

Lot No. A300-551A-T-1

APPLICATIONS	WB, IHC
SPECIES REACTIVITY	Human
AMOUNT	10 µl
CONCENTRATION	200 µg/ml
STORAGE/SHELF LIFE	2 – 8°C / 1 year from date of receipt
PHYSICAL STATE	Liquid
BUFFER	Tris-buffered Saline containing 0.1% BSA and 0.09% Sodium Azide
ISOTYPE	IgG
ORIGIN	USA
PRODUCTION PROCEDURES	Antibody was affinity purified using an epitope specific to NMI immobilized on solid support.

The epitope recognized by A300-551A-T maps to a region between residue 250 and the C-terminus (residue 307) of human N-myc and STAT interactor using the numbering given in entry NP_004679.1 (GeneID 9111).

APPLICATIONS Centrifuge tube to remove product from lid. Optimal working dilutions should be determined experimentally by the investigator. Prepare working dilution immediately before use.

Western Blot 1:2,000 – 1:10,000

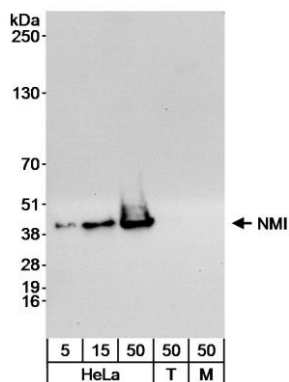
Immunoprecipitation Not recommended. Use rabbit anti-NMI antibody A300-550A.

Immunohistochemistry 1:500 – 1:2,000. Epitope retrieval with citrate buffer pH 6.0 is recommended for FFPE tissue sections.

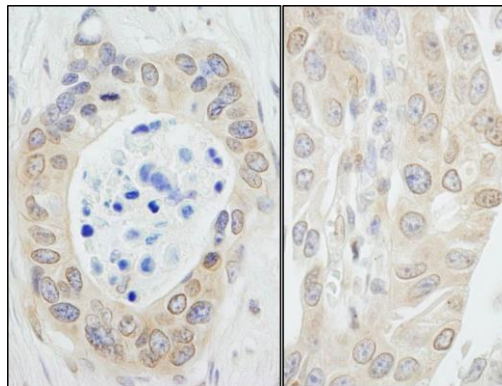
ADDITIONAL INFO <https://www.bethyl.com/product/A300-551A-T>

Use the link above to view SDS, a current list of citations, and other product specific information.

This document certifies that this product has met all of the quality control standards defined by Bethyl Laboratories, Inc.
Michael Spencer, PhD Date: June 6, 2022



Detection of human NMI by western blot. *Samples:* Whole cell lysate from HeLa (5, 15 and 50 µg), HEK293T (T; 50 µg) and NIH 3T3 (M; 50 µg) cells. *Antibody:* Affinity purified rabbit anti-NMI antibody (Cat. No. A300-551A) used at 0.04 µg/ml for WB. *Detection:* Chemiluminescence with an exposure time of 30 seconds.



Detection of human NMI by immunohistochemistry. *Sample:* FFPE section of human ovarian carcinoma (left) and bladder carcinoma (right). *Antibody:* Affinity purified rabbit anti-NMI (Cat. No. A300-551A Lot1) used at a dilution of 1:1,000 (0.2 µg/ml). *Detection:* DAB