

# MNT Antibody

Rabbit Polyclonal

Antigen Affinity Purified Protein ID NP\_064706.1

Catalog No. A303-626A-M GeneID 4335

Lot No. A303-626A-M-2

---

<b>APPLICATIONS</b>	WB, IP
<b>SPECIES REACTIVITY</b>	Human
<b>PRESUMED REACTIVITY</b>	Based on 100% sequence identity, this antibody is predicted to react with Mouse
<b>AMOUNT</b>	100 µl (10 blots)
<b>CONCENTRATION</b>	100 µg/ml
<b>STORAGE/SHELF LIFE</b>	2 – 8°C / 1 year from date of receipt
<b>PHYSICAL STATE</b>	Liquid
<b>BUFFER</b>	Tris-buffered Saline containing 0.1% BSA and 0.09% Sodium Azide
<b>ISOTYPE</b>	IgG
<b>ORIGIN</b>	USA
<b>PRODUCTION PROCEDURES</b>	Antibody was affinity purified using an epitope specific to MNT immobilized on solid support.

The epitope recognized by A303-626A-M maps to a region between residue 1 and 50 of human MAX Binding Protein using the numbering given in entry NP\_064706.1 (GeneID 4335).

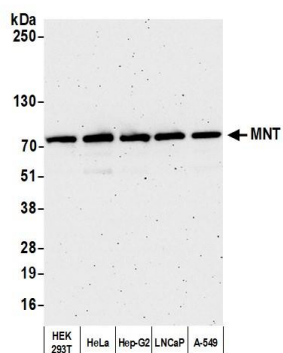
**APPLICATIONS** Centrifuge tube to remove product from lid. Optimal working dilutions should be determined experimentally by the investigator. Prepare working dilution immediately before use.

Western Blot 1:1000

Immunoprecipitation The antibody contained within A303-626A-M has been qualified for use in immunoprecipitation; however, we recommend using the alternative formulation of this antibody found as product A303-626A.

**ADDITIONAL INFO** <https://www.bethyl.com/product/A303-626A-M>  
Use the link above to view SDS, a current list of citations, and other product specific information.  
IP-western blot protocol: [https://www.bethyl.com/content/protocol\\_IP\\_WB](https://www.bethyl.com/content/protocol_IP_WB)

This document certifies that this product has met all of the quality control standards defined by Bethyl Laboratories, Inc.  
Michael Spencer, PhD Date: March 18, 2022



**Detection of human MNT by western blot.** *Samples:* Whole cell lysate (10  $\mu$ g) from HEK293T, HeLa, Hep-G2, LNCaP, and A-549 cells prepared using NETN lysis buffer. *Antibody:* Affinity purified rabbit anti-MNT antibody (A303-626A-M lot 2) used for WB at 1:1000. *Detection:* Chemiluminescence with an exposure time of 3 minutes.