

# MM-1 Antibody

Rabbit Polyclonal

Antigen Affinity Purified Protein ID NP\_002615.2

Catalog No. A304-049A-T GenelD 5204

Lot No. A304-049A-T-1

---

<b>APPLICATIONS</b>	WB
<b>SPECIES REACTIVITY</b>	Human, Mouse
<b>PRESUMED REACTIVITY</b>	Based on 100% sequence identity, this antibody is predicted to react with Orangutan
<b>AMOUNT</b>	10 µl
<b>CONCENTRATION</b>	1000 µg/ml
<b>STORAGE/SHELF LIFE</b>	2 – 8°C / 1 year from date of receipt
<b>PHYSICAL STATE</b>	Liquid
<b>BUFFER</b>	Tris-citrate/phosphate buffer, pH 7 to 8 containing 0.09% Sodium Azide
<b>ISOTYPE</b>	IgG
<b>ORIGIN</b>	USA

**PRODUCTION PROCEDURES** Antibody was affinity purified using an epitope specific to MM-1 immobilized on solid support.

The epitope recognized by A304-049A-T maps to a region between residue 1 to 50 of human Prefoldin Subunit 5 using the numbering given in entry NP\_002615.2 (GenelD 5204).

Antibody concentration was determined by extinction coefficient: absorbance at 280 nm of 1.4 equals 1.0 mg of IgG.

**APPLICATIONS** Centrifuge tube to remove product from lid. Optimal working dilutions should be determined experimentally by the investigator. Prepare working dilution immediately before use.

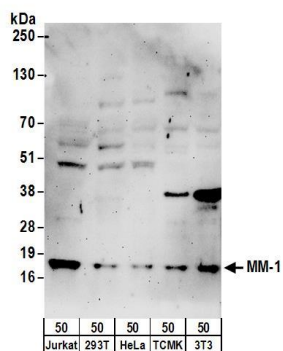
Western Blot 1:500 – 1:2,500

Immunoprecipitation Not recommended

**ADDITIONAL INFO** <https://www.bethyl.com/product/A304-049A-T>

Use the link above to view SDS, a current list of citations, and other product specific information.

This document certifies that this product has met all of the quality control standards defined by Bethyl Laboratories, Inc.  
Michael Spencer, PhD Date: June 6, 2022

**Detection of human and mouse MM-1 by western blot.**

*Samples:* Whole cell lysate (50 µg) from Jurkat, HEK293T, HeLa, mouse TCMK-1, and mouse NIH 3T3 cells.

*Antibodies:* Affinity purified rabbit anti-MM-1 antibody A304-049A (lot A304-049A-1) used for WB at 1 µg/ml.

*Detection:* Chemiluminescence with an exposure time of 3 minutes.